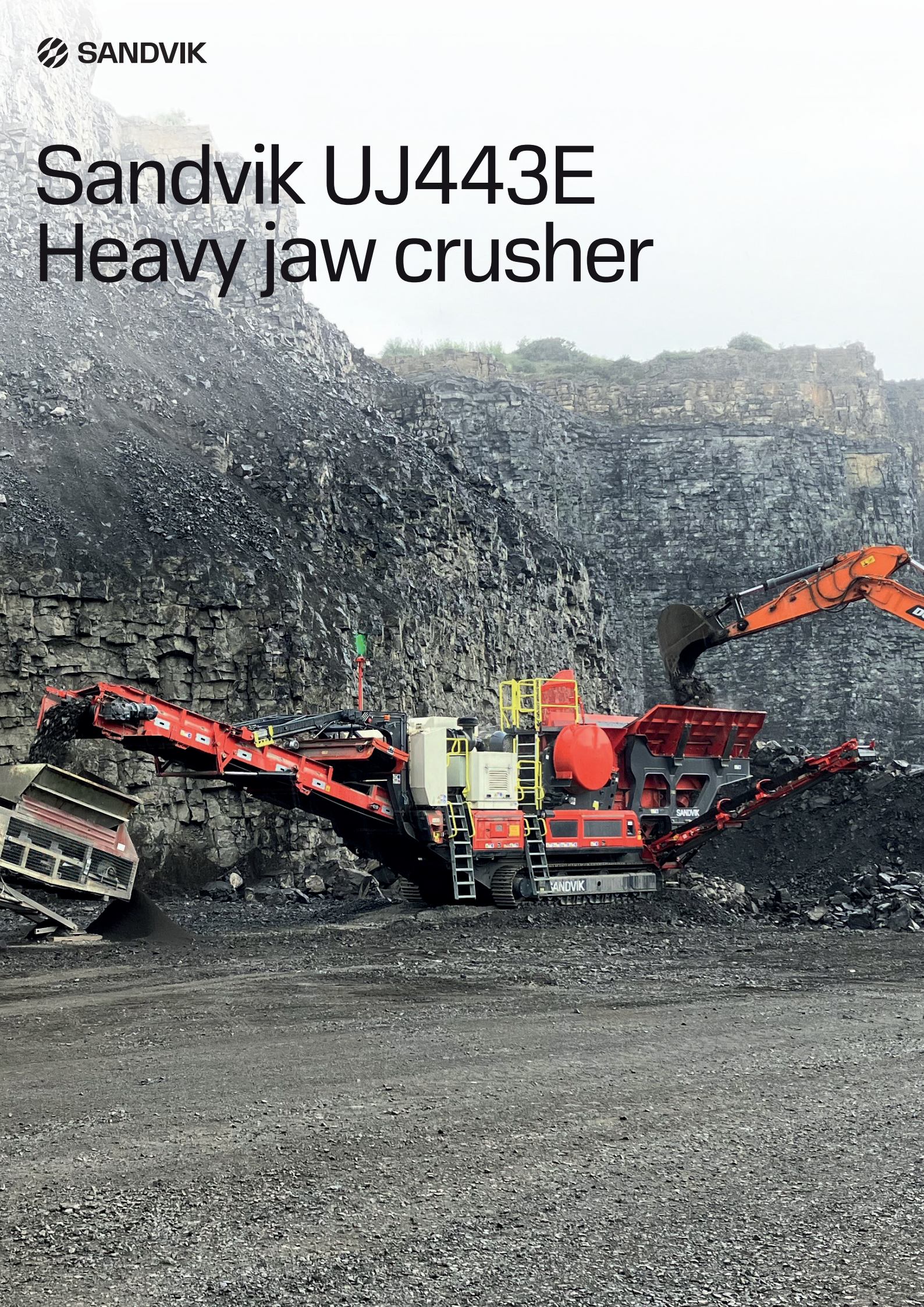


Sandvik UJ443E Heavy jaw crusher



Up to

30%

fuel efficient vs existing generation

Less than

9%

of hydraulic oil required over 10,000hrs of machine usage vs existing generation (subject to oil sampling)



Designed for the future. Built to last.



Sandvik Mobile Crushers and Screens continues to drive the sustainability shift in the crushing and screening industry with our new fully electric, UJ443E heavy jaw crusher.

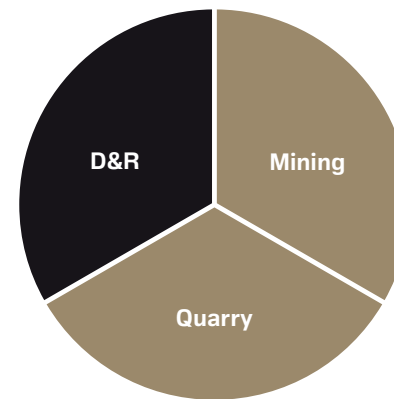
Using our decades of experience and knowledge in building robust, sustainable, powerful, and fully electric crushing and screening units, the UJ443E is the newest innovation in our sustainable heavy range of units.



Sustainability

Our purpose is to make the shift and advance the world through engineering. We have a unique contribution to make in helping to create a net zero, circular and regenerative world.

The future of rock processing will be net zero with equipment forming part of a circular value chain. Equipment will be powered by fossil-free energy and designed for maximum energy efficiency. Rock processing will be circular and highly productive, enabling customers to extract maximum value from resources from their mining or infrastructure applications, while minimizing waste and energy intensity.



Circularity: More than 90% circular



Climate: Halve the CO2 impact



Champion people: Zero harm to people



Play fair: Always do the right thing



Break boundaries. Crush rock.

The UJ443E heavy jaw crusher has been designed with increased focus on productivity, sustainability, and durability.

This unit allows you to choose your preferred energy source, either connected to an external electricity supply or via the onboard genset using HVO or diesel.

Operating whilst connected can bring several advantages including, significantly lowering running costs, extending drivetrain service intervals, reducing time spent refueling, reducing onsite emissions and lowers noise levels.

With a host of new innovative features on the UJ443E, we break boundaries, so you can crush rock.

Up to
20%

improvement in fuel consumption when connecting a downstream plant (compared to running separate units)

The fully electric track drives provide better control and agility when tracking and loading. This significantly reduces the need for hydraulics on the plant and long term service costs

Redesigned feed station with patent pending hydraulic lift function for improved maintenance access and fixed jaw removal

Larger feed hopper is provided with a patent pending folding and locking mechanism. The standard volume is 8m³ / 11cubic yards. This can be increased with optional hopper extensions

Two feeder options are available. A vibrating grizzly for clean rock or a vibrating grizzly with under-screen for rock containing fines. Both are rubber lined and have significantly larger grizzly cassettes for greater fines removal before crushing

Class leading 1400mm (55") wide main conveyor is now angle adjustable and extended with remote hydraulic lock out and features a height adjustable overband magnet

There is also a larger bypass chute and optional natural fines conveyor, with 650mm / 26" wide belt and a 3.5m / 12ft stockpile. It is electrically driven and folds for transport

The Sandvik CJ412 jaw crusher has enhanced connectivity features, providing the operator with live operating parameters, heavy duty electric drive and onboard hydraulics for CSS setting regulation

The jaw crusher assembly can be removed for transport, useful in regions with restrictive transport weight regulations

The crusher unblock software reduces the need for an onboard rock hammer, reducing downtime and increasing safety onsite

The alternator is sized accordingly so that a downstream screening plant could be operated from the plant's onboard genset, simplifying servicing and maintenance and improving overall fuel consumption

Up to
700 tph
depending on application



UJ443E

Feed hopper

- Standard hopper capacity of 8.3m³ / 10.9yd³ with hopper extensions available
- Fast and convenient set up from ground level
- Hydraulic folding side wings with unique self-locking design (patent pending)
- Optional rubber lining to lower impact and noise

Vibrating grizzly feeder (option)

- Long and stepped grizzly section for high capacity pre-separation and accuracy
- Built in screen mesh under grizzly
- Rubber lined impact area for increased durability
- Self adjusting and stepless regulation of feeding speed

Vibrating grizzly feeder + under screen (option)

- Long and stepped grizzly section for high capacity pre-separation and accuracy
- Rubber lined impact area for long lifetime of entire unit and noise reduction
- Self adjusting and stepless regulation of feeding speed
- High effective 2-deck under screen

Safety platforms

- Multiple platforms and ladders with self locking doors for inspection and maintenance

Chassis

- F.E.A. optimized chassis
- Designed for use in wide range of ambient conditions
- Fully electric driven tracks for more agile control/maneuverability – no hydraulic oil used

Natural fines conveyor (option)

- High stockpile capacity
- Hydraulic folding for quick set up
- High pressure dust suppression including dust cover and level sensor options

Light mast

- Clear visualization of status on production displayed on LED light mast

Jaw crusher

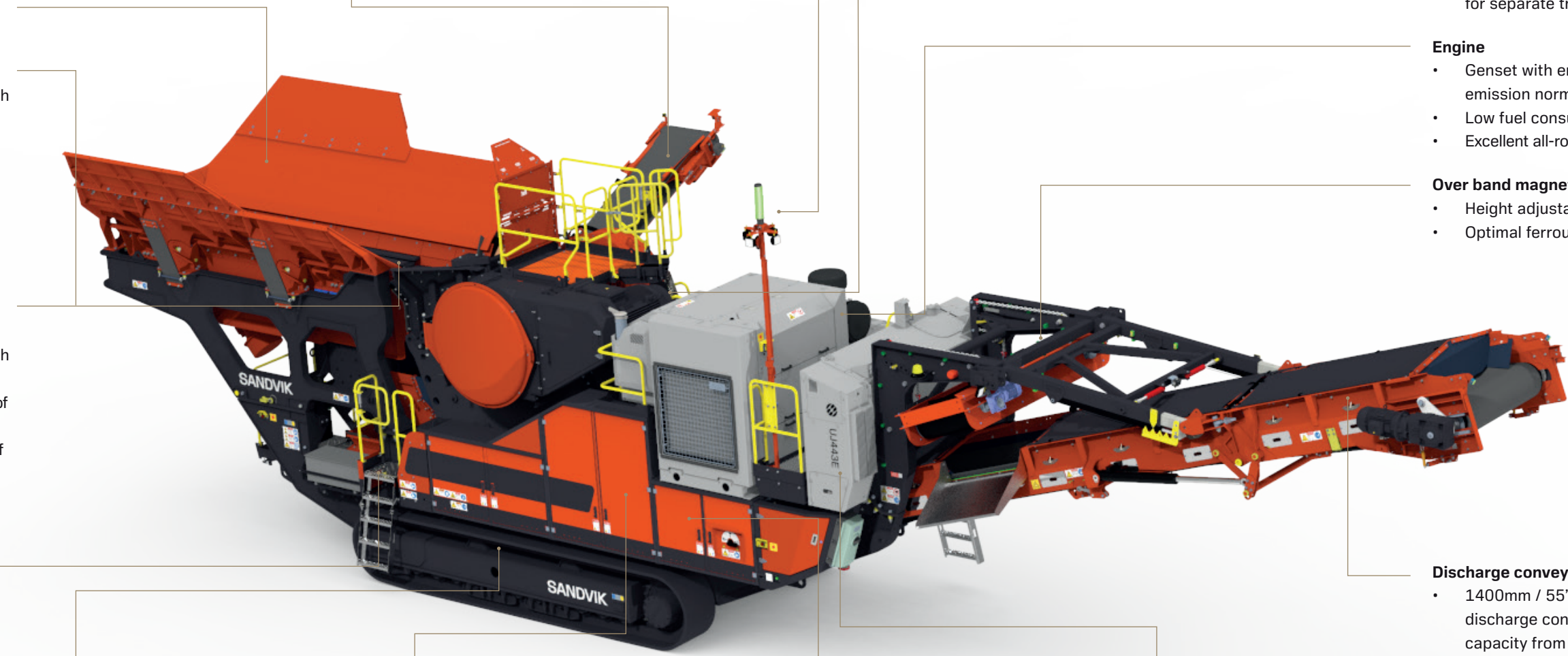
- Latest model of CJ412 jaw crusher with 1200 x 830mm / 47" x 33" feed opening
- Level sensors for optimized production
- Crusher unblock technology
- Auto greasing
- Jaw crusher package can be removed for separate transport

Engine

- Genset with engine fulfilling latest emission norms
- Low fuel consumption
- Excellent all-round engine serviceability

Over band magnet

- Height adjustable over band magnet
- Optimal ferrous removal



Discharge conveyor

- 1400mm / 55" wide heavy duty discharge conveyor supports high capacity from crusher
- Less restriction on the material exiting the crusher
- Extended length for larger stockpile capacity
- Hydraulically raise/ lower also allows for ground level maintenance
- High pressure dust suppression including dust cover and stock pile level sensor

Power

- All components onboard are electrically driven
- Powered by onboard genset or via external electric power supply
- 125A electrical outlet for powering a downstream plant

Connectivity

- NEW automation system with Optik™ intuitive user experience
- Camera above crusher, displayed on main screen

Fuel storage

- Generous fuel storage onboard with electric refueling pump for longer intervals between refueling
- Minimized amount of hydraulic oil onboard reducing the frequency for maintenance

Connectivity

Intuitive control: Optik™ intuitive user experience, simplified operation controls and total integration with My Fleet telematics solution.

Maximize uptime: Real time information

Optimize decision making: Accurate data collection

Boost output: Diagnostic assistance

Enhance troubleshooting: Pre-installed guides

Easy navigation: User-friendly dashboard

My Fleet
Get in-depth insights into your connected crusher with Sandvik My Fleet. It is the smart, intelligent way of monitoring crusher behavior and using that information to optimize and improve business performance. Now you can make informed business decisions using accurate, reliable data.

Connected to Sandvik My Fleet with 7-year data subscription. Benefits include 24/7 fleet management, geo-fencing, and remote operator support.



7 YEAR DATA SUBSCRIPTION




Aftermarket offering


Regular and efficient maintenance is vital to your productivity but in the event of an unexpected breakdown, you need to have the replacement parts available to hand immediately to avoid any unnecessary downtime. Our new packages will ensure that you have all the relevant parts and consumables in stock giving you peace of mind.

The kits are designed around “best practice” repair and replace, and include all items required for professional repair, removing the concern of secondary failure. Each kit is available individually to allow selection on our portal that best suits each customer’s needs. No two applications are the same, so having this flexibility to select the type and package quantity to suit individual needs is crucial to delivering optimum performance and support.


- 01




Maintenance package
Faster wearing items.
- 02



Repair package
Slower moving items where high usage is not expected.
- 03



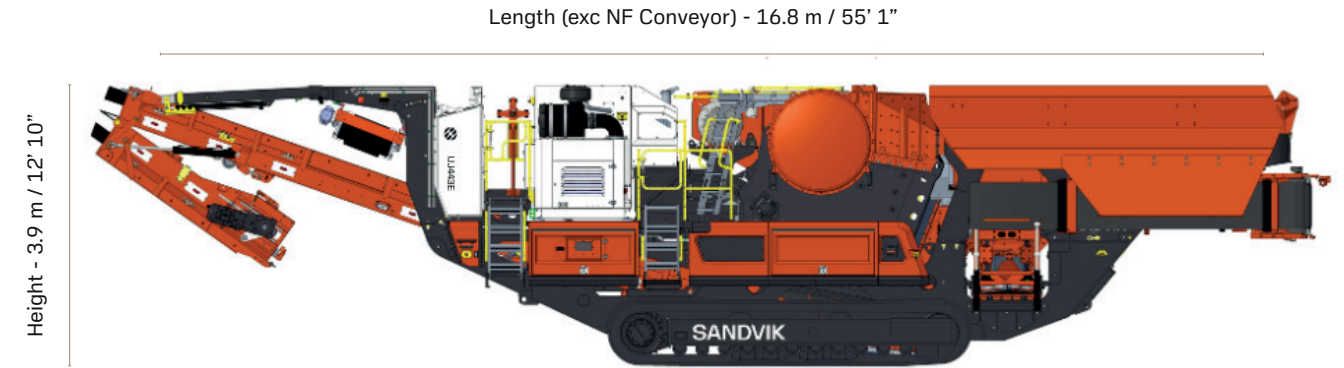
Overhaul package
Items which we would not expect to be required under standard operating conditions.
- 04



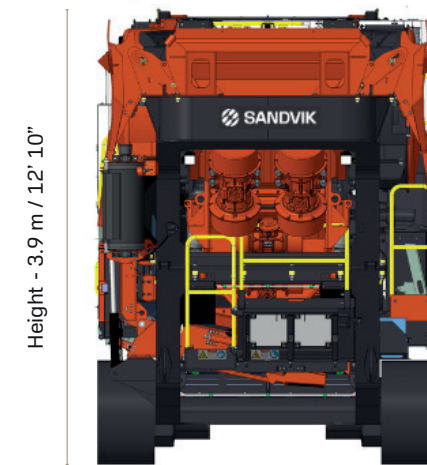
Endurance package
Selection of packages which can be tailored to specific customer’s needs for high hour operations, to maximize uptime and performance.



Transportation dimensions



Length (inc NF Conveyor) - 17.2 m / 56' 6"



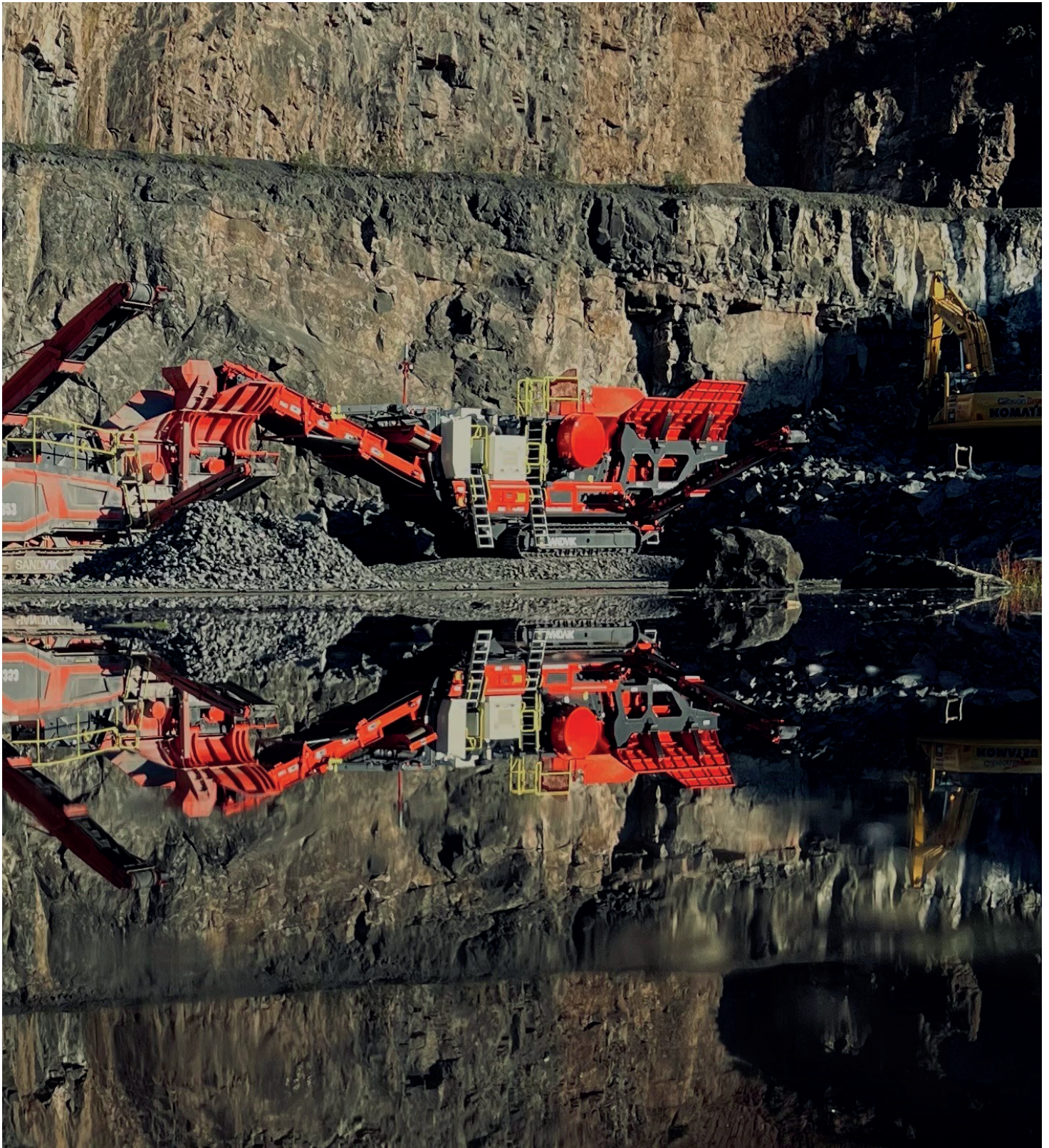
Width - 3.0 m / 9' 10"

Transport dimensions (Base unit)

Height	3.9 m / 12' 10"
Width	3.0 m / 9' 10"
Length (excl. NF conveyor)	16.8 m / 55' 1"
Length (incl. NF conveyor)	17.2 m / 56' 6"
Weight VGF and VGF+US (excl. NF conveyor)	69,500 kg / 153,221 lbs
Weight VGF and VGF+US (incl. NF conveyor)	71,000 kg / 156,528 lbs

Transport (Base unit crusher separated)

Weight (excl. NF conveyor)	38,645 kg / 85,197 lbs
Weight (incl. NF conveyor)	40,145 kg / 88,504 lbs
Weight	30,855 kg / 68,023 lbs



The material in this brochure is of general application for information and guidance only, and no representation or warranty is made or given by the manufacturer that its products will be suitable for a customer's particular purpose and enquiry should always be made of the manufacturer to ensure such suitability. Whilst every effort has been made in the preparation of this document to ensure its accuracy, the manufacturer assumes no liability resulting from errors or omissions in this document, or from the use or interpretation of the information contained herein. The manufacturer reserves the right to make changes to the information in this brochure and the product design without reservation and without notification to users.

ENG © Sandvik Mobile Crushing and Screening 2023 SANDVIK is a registered trademark owned by Sandvik Intellectual Property AB in Sweden and other countries. Subject to change without notice